



Intelligent Asset Management

Introduction

Synertech's unrivalled expertise and experience in the design, development, installation and support of innovative Radio Frequency Identification (RFID) business systems and information management solutions, enables the company to offer asset tracking and management applications that guarantee the delivery of unsurpassed business benefit.

Traxsense

Synertech's Traxsense software platform brings to life innovative, automated monitoring and tracking solutions by providing clients with dashboards and analytics to easily track all assets and to monitor business performance indicators. Smart sensor enabled assets are transformed into intelligent data sources. These smart assets are connected in real-time which provides organisations with controlled and auditable IOT information. Traxsense not only provides for immediate management decisions, it also harnesses the power of data analytics for business optimisation.



Background

Asset management is a critical issue for any organisation. It not only involves substantial capital investment in a comprehensive list of items that are regarded as non-negotiable tools of business success, but also imposes strictly-enforced and measurable corporate governance and risk management compliance requirements that are subject to specific reporting and auditing procedures.

A company's fixed asset register, a compulsory part of any organisation's standard operating procedures, is often little more than a spreadsheet that is maintained and updated on an annual

basis through a manual process based on visual confirmation that the items listed are still in use or held by the individual or department to which they were originally assigned.

These items can range from office furniture, such as desks and chairs, through to laptops and extremely high-value IT equipment and specialised tools, to investments in priceless corporate art pieces that often grace the boardrooms of companies.

In rare instances when RFID tags may not be entirely appropriate across the entire inventory of assets, bar-code or complementary automatic identification and data capture (AIDC) technology will be seamlessly integrated into the overall solution.

The key to the effective and efficient management of an organisation's asset register lies in automation and the ability to objectively monitor in real time what assets exist, where each is located, how each item is associated to an individual, a group or a department, and its movements.

During the past decade, RFID has come to be regarded universally as the standard by which all asset tracking and management systems are measured.



Manages Office Furniture and Equipment



IT Infrastructure Monitoring and Management

Business Benefits at a Glance

The most significant business benefit guaranteed by Synertech's asset tracking and management solution is based on the power and versatility of RFID as an enabling technology.

The establishment of an RFID infrastructure for asset management enables the organisation to build and implement many other different applications that will reduce cost and increase efficiencies at an accelerated rate of return on investment.

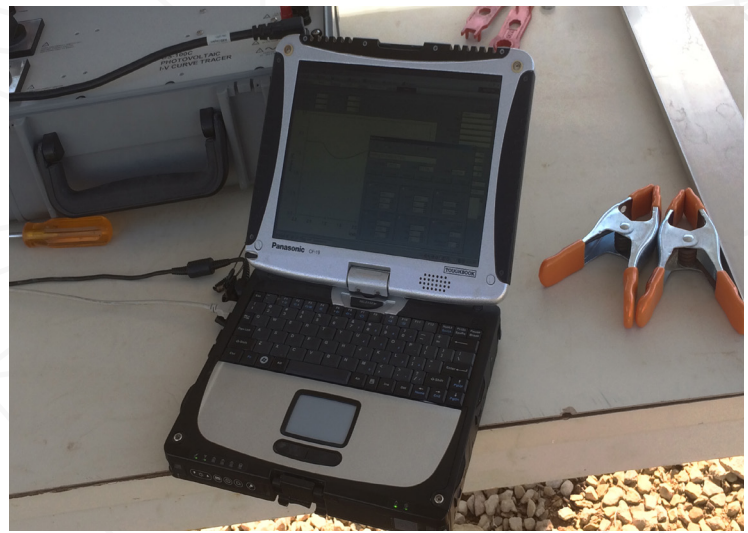
Other benefits include:

- **Improved tracking** – Traxsense pinpoints accuracy related to asset movements based on vital location detection information being made available on a real-time basis
- **Increased security** - Traxsense can be configured to provide alerts and alarms as well as other security features such links into other options such as Closed Circuit Television (CCTV) and biometric access
- **Enhanced compliance and risk management** - Traxsense conforms to standardised general accounting and auditing standards
- **Unrestricted access to data** - The ability to provide completely objective and consistently reliable data that can be accessed by authorised users via the web from anywhere in the world on virtually any digital device on a 24/7 basis
- **Objective and reliable data** - The provision of data that is totally independent of any other source of information due to automation that eliminates human error and prevents manipulation associated with spreadsheets and manual systems
- **High level of customisation** - Traxsense is quickly and easily customised to meet the exact requirements of virtually any business environment

Solution Overview

The key components of an ideal RFID asset management solution will take into account, among others, the following factors:

- The footprint of the asset and its ability to accommodate a RFID tag
- The surface of the asset to be tagged, such as metal, plastic, cloth, living tissue (nursery stock, livestock)
- The duration the asset needs to be tagged for - short or long term, permanent or temporary



Asset Linked to Particular Individual

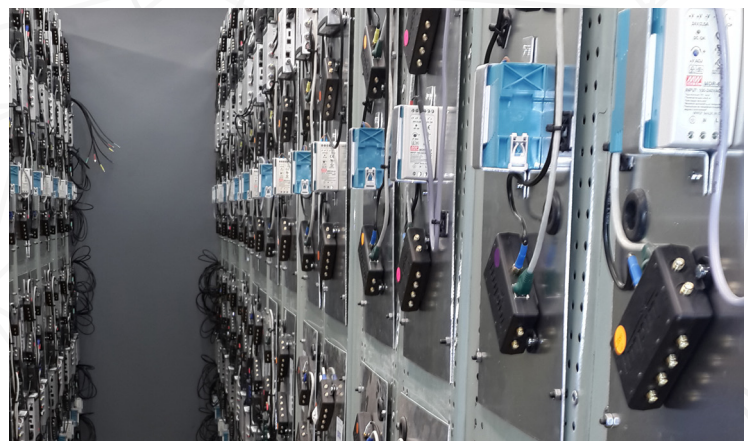
- The item's exposure to environmental conditions, such as moisture, chemicals, abrasion, dust, human contact, pressure, salt water, weather conditions (extreme temperatures, ultra-violet light etc.)
- Performance requirements such as read distance, the type of readers that will collect the data, the amount of time required to read or write to the tag, how many tags will be read at a time, how quickly this will be done etc.

For example, the same system used for asset management could be extended to manage operating expenditures in the same business environment, including items such as high value IT consumables, the management of rental equipment and lease agreements, aspects of security etc.

Key Features at a Glance

Synertech's asset tracking and management solution Traxsense is purposebuilt to take into account the client's specific requirements. Key features include:

- **Live monitoring via Dashboards** – The ability to track and authenticate where an asset is in near-real time according to user-defined parameters such as restrictions on its movements within a facility or between departments etc.
- **Reporting** – The generation of reports based on user-defined requirements. Virtually any report can be drawn up based on the type of information required. Reports can be delivered via e-mail and printed, or integrated into other applications
- **Alerts and notifications** – Traxsense has the ability to notify nominated individuals or key personnel when an asset is



RFID Infrastructure for Retrofitting for Asset Management



Seamless Asset Scanner



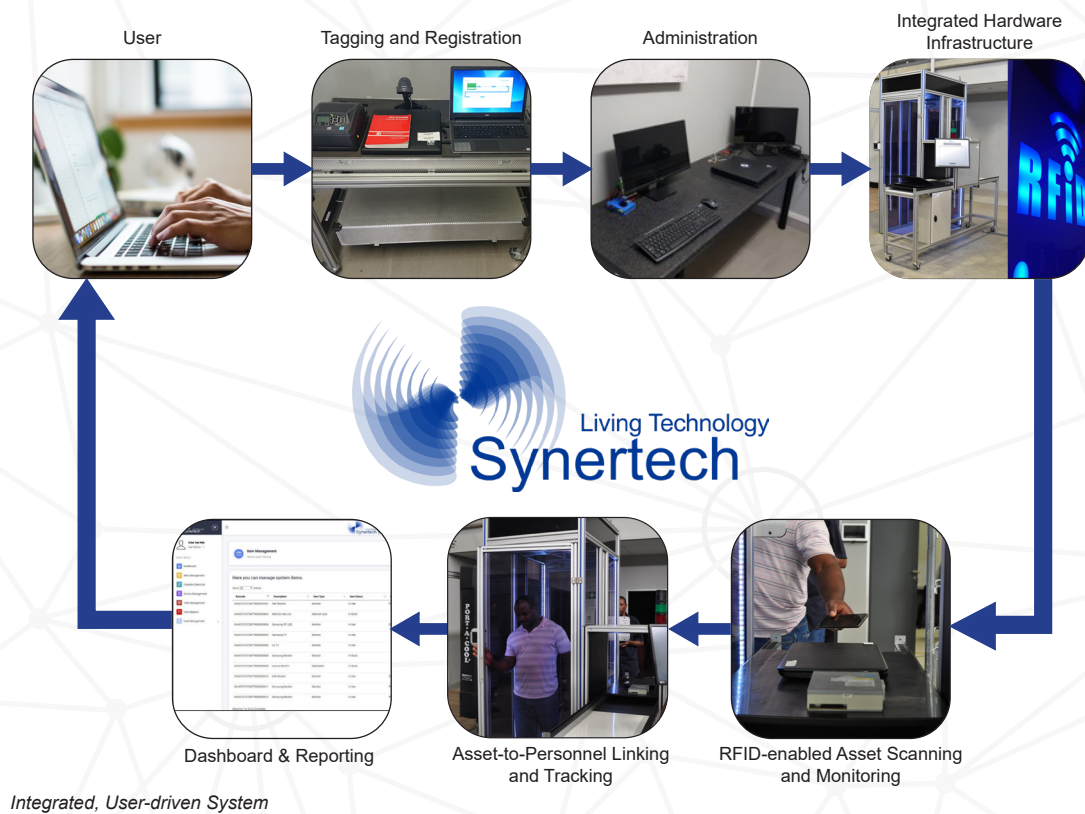
Office Artwork

After-Sales Service

- **Warranty** – All systems are backed by a 12-month warranty on materials and workmanship commencing from date of delivery
- **Maintenance and support** - A range of technical support and maintenance options are available based on formal service level agreements
- **Training** - Various training options are available ranging from comprehensive classroom training to on-the job training. All systems are provided with training documentation

Summary

Designed, developed and implemented by Synertech, a proudly South African company with nearly two decades of success is at the forefront of supplying innovative RFID technological solutions to clients across a broad range of industry sectors.



For further information contact:

email: sales@rfid.co.za | Tel: +27(0)11 794 3513 | +27(0)10 350 5200 | Visit: www.rfid.co.za

Copyright © 2016, Synertech and or its affiliates. All rights reserved. Other names may be trademarks of their respective owners.